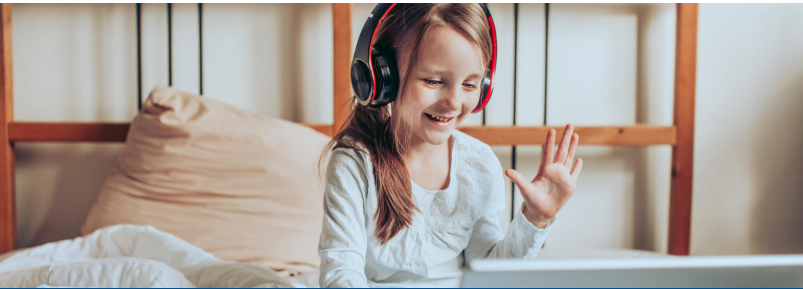


ARE YOU READY TO MAKE A DIFFERENCE
IN A COMMUNITY THAT NEEDS YOU NOW
MORE THAN EVER?

GIVE TO THE NH STATE EMPLOYEES' CHARITABLE CAMPAIGN
SEPTEMBER 9TH - OCTOBER 9TH



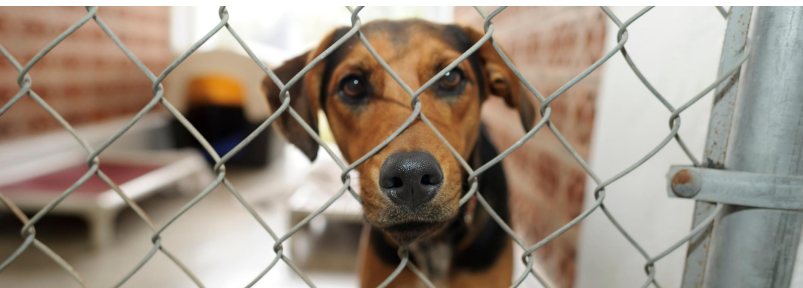
YOU

CONNECT CHILDREN WITH CRITICAL
SUPPORTS THAT ADVANCE THEIR READING
AND MATH SKILLS



YOU

PROVIDE HEALTHY MEALS TO THE
HUNGRY AND HOMELESS



YOU

GIVE ABANDONED ANIMALS
THEIR FOREVER HOMES



YOU

HELP INDIVIDUALS RECEIVE
COMPASSIONATE MENTAL
HEALTH CARE

VISIT WWW.GRANITEUW.ORG/NHSECC TO LEARN MORE

SCAN THIS CODE
WITH A CAMERA
APP TO DONATE



Making a Difference for **25** *Years!*

NH STATE EMPLOYEES' CHARITABLE CAMPAIGN



THANK YOU!

FOR MAKING A DIFFERENCE IN YOUR COMMUNITY!



VISIT WWW.GRANITEUW.ORG/NHSECC TO LEARN MORE



Making a Difference for **25** Years!

NH STATE EMPLOYEES' CHARITABLE CAMPAIGN